

Overload Relays

3RB2 / 3RB3 Solid-State Overload Relays

3RB20, 3RB21, 3RB30, 3RB31 up to 630A
for standard applications

• Revised •
04/20/15







SIRIUS



3RB20 solid-state overload relays and stand-alone installation²⁾³⁾, CLASS 10 or CLASS 20 for direct mounting¹⁾²⁾

Features and technical specifications:

- Overload protection, phase failure protection and unbalance protection
- Internal power supply
- Auxiliary contacts 1 NO + 1 NC
- Manual and automatic RESET
- Switch position indicator
- TEST function and self-monitoring

Size Contactor ⁴⁾	Set current value of the inverse-time delayed overload trip	Screw Terminal Order Number	Spring Loaded Terminal Order Number	Weight per PU approx. kg	
Size S00¹⁾					
 3RB30 16-1RB0	S00	0.1 ... 0.4	3RB30 16-□RB0	3RB30 16-□RE0	0.172
		0.32 ... 1.25	3RB30 16-□NB0	3RB30 16-□NE0	0.172
		1 ... 4	3RB30 16-□PB0	3RB30 16-□PE0	0.172
		3 ... 12	3RB30 16-□SB0	3RB30 16-□SE0	0.172
		4 ... 16	3RB30 16-□TB0	3RB30 16-□TE0	0.172
Size S0¹⁾					
 3RB30 26-1QB0	S0	0.1 ... 0.4	3RB30 26-□RB0	3RB30 26-□RE0	0.250
		0.32 ... 1.25	3RB30 26-□NB0	3RB30 26-□NE0	0.250
		1 ... 4	3RB30 26-□PB0	3RB30 26-□PE0	0.250
		3 ... 12	3RB30 26-□SB0	3RB30 26-□SE0	0.250
		6 ... 25	3RB30 26-□QB0	3RB30 26-□QE0	0.250
		10 ... 40	3RB30 26-□VB0	3RB30 26-□VE0	0.250
Size S2¹⁾³⁾⁵⁾					
 3RB30 36-1UB0	S2	12 ... 50	with busbar 3RB30 36-□UB0	3RB30 36-□UD0	0.360
			with pass through CT's 3RB30 36-□UW1	3RB30 36-□UX1	0.230
		20 ... 80	with busbar 3RB30 36-□WB0	3RB30 36-□WD0	0.360
			with pass through CT's 3RB30 36-□WW1	3RB30 36-□WX1	0.230
Size S3¹⁾³⁾⁵⁾					
 3RB20 46-1EB0	S3	12.5 ... 50	with busbar 3RB20 46-□UB0	3RB20 46-□UD0	0.560
		25 ... 100	with busbar 3RB20 46-□EB0	3RB20 46-□ED0	0.560
			with pass through CT's 3RB20 46-□EW1	3RB20 46-□EX1	0.450
Size S6²⁾⁵⁾					
 3RB20 56-1FW2	S6	50 ... 200	with busbar 3RB20 56-□FC2	3RB20 56-□FF2	1.030
			with pass through CT's 3RB20 56-□FW2	3RB20 56-□FX2	0.690
Size S10/S12²⁾					
 3RB20 66-1MC2	S10/S12 and size 14 (3TF68/ 3TF69)	55 ... 250	with busbar 3RB20 66-□GC2	3RB20 66-□GF2	1.820
		160 ... 630	with busbar 3RB20 66-□MC2	3RB20 66-□MF2	1.820
			2 Class 20	2 Class 20	
			1 Class 10	1 Class 10	

1) The relays with an Order No. ending with "0" are designed for direct mounting to the contactor. With the matching terminal brackets (see Accessories) the sizes S00 to S3 can also be installed as stand-alone units.

2) The relays with an Order No. ending with "2" are designed for direct mounting and stand-alone installation. For 3TF68/3TF69 contactors, direct mounting is not possible.

3) The relays with an Order No. ending with "1" are designed for stand-alone installation.

4) Observe maximum rated operational current of the devices.

5) The relays with an Order No. with "X" in 10th position are equipped with a straight-through transformer.

For accessories, see pages 3/49-3/50.

For description, see pages 3/18-3/20.

For technical data, see pages 3/24-3/29.

For dimension drawings, see page 3/30.

For schematic diagrams, see page 3/31.

Overload Relays

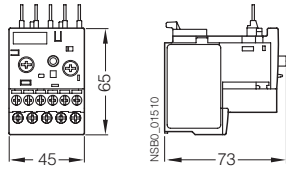
3RB2 / 3RB3 Solid-State Overload Relays

3RB20, 3RB21, 3RB30, 3RB31 up to 630A
for standard applications

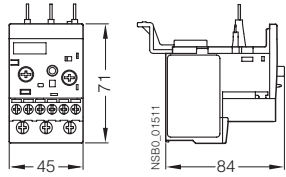
SIRIUS



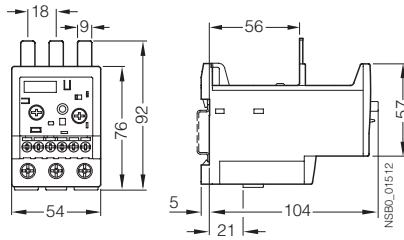
Dimensional drawings



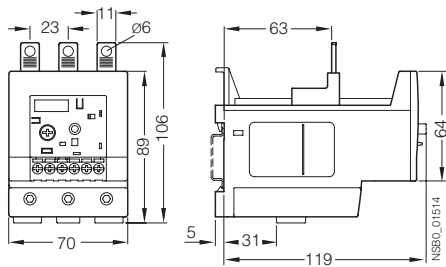
3RB30 16, 3RB31 13, size S00



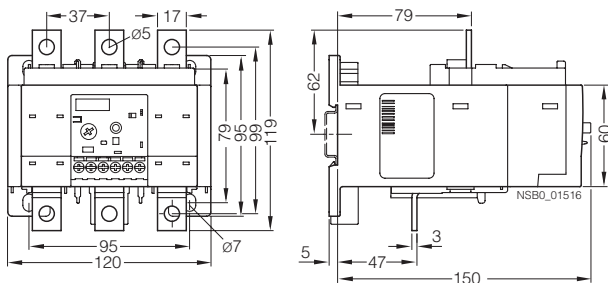
3RB30 26, 3RB31 23, size S0



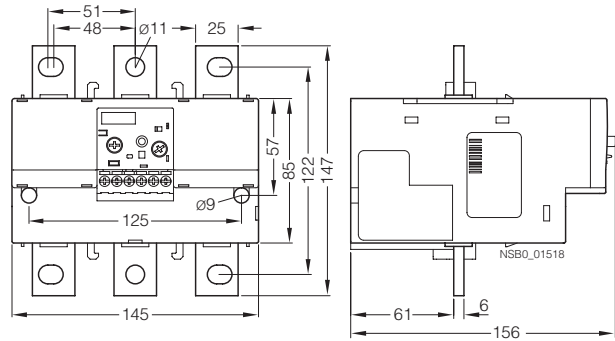
3RB20 36, 3RB21 33, size S2



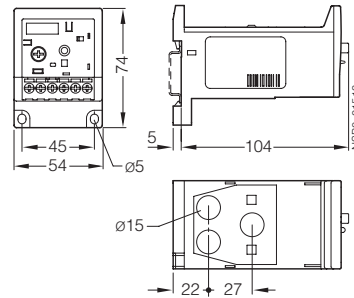
3RB20 46, 3RB21 43, size S3



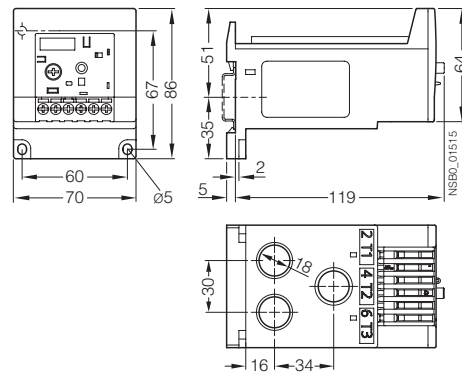
3RB20 56, 3RB21 53, size S6



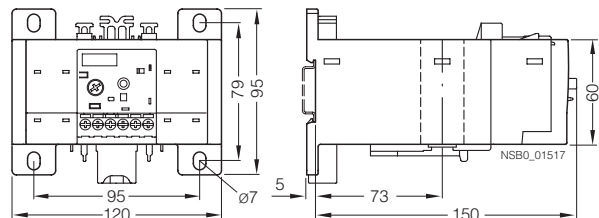
3RB20 66, 3RB21 63, size S10/S12



3RB20 36, 3RB21 33, size S2 with straight-through transformer



3RB20 46, 3RB21 43, size S3 with straight-through transformer



3RB20 56, 3RB21 53, size S6 with straight-through transformer