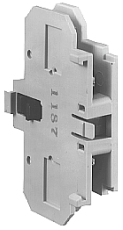


Accessories

Auxiliary Contact Kits (Side Mounted)

Heavy-Duty Pilot Rated for 10A at 600 Vac

Side Mounted Auxiliary Contact



| Circuit | With Standard Pressure Plate Terminals Catalog Number | With Pressure Plate and Quick Connect Terminals Catalog Number |
|---------------------------|----------------------------------------------------------|-------------------------------------------------------------------|
| For 15 through 75A | | |
| 1NO | C320KG1 | C320KG11 |
| 1NC | C320KG2 | C320KG12 |
| 1NO-1NC | C320KG3 | C320KG13 |
| 2NO | C320KG4 | C320KG14 |
| 2NC | C320KG5 | C320KG15 |

Auxiliary Contact for FI Series Contactors



| | | |
|----------------|---|---------------|
| For 90A | | |
| 1NO | — | FIC320DPG10 ① |
| 1NC | — | FIC320DPG01 ① |
| 1NO-1NC | — | FIC320DPG11 ① |
| 2NO | — | FIC320DPG20 ① |

| | | |
|-----------------------------|-----------|---|
| For 120 through 360A | | |
| 1NO | C320KGS20 | — |
| 1NC | C320KGS21 | — |
| 1NO-1NC | C320KGS22 | — |

Side Mounted Snap Switch



Snap Switch Design Side Mounted Auxiliary Contacts (For 15–75A Contactors Only)

| Circuit | Snap Switch Design with Quick Connect Terminals Catalog Number |
|---------|-------------------------------------------------------------------|
| 1NO-1NC | C320SNP11 |
| 2NO-2NC | C320SNP22 |

Magnet Coil Quick Connect Terminal

Description

Extra dual quick connect terminals (U-shaped) for magnet coil terminals ②

Notes

- ① Valid on Series **FI** contactors only.
- ② To order, add suffix number **9** to the complete catalog number.
Example: C25DND215A**9**.