

Accessories

Auxiliary Contacts

XTMCF_



Front-Mount Auxiliary Contacts for Use with XTRM Mini Control Relays

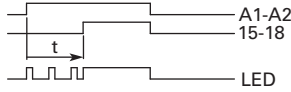
Conventional Thermal Current, I _{th} Open (A)	Rated Operational Current AC-15 I _g (A)			Contact Configuration	Contact Sequence	Pkg. Qty. ①	Screw Terminal Catalog Number
	220V	380V	500V				
10	4	2	1.5	2NC		5	XTMCFXA02
10	4	2	1.5	1NO-1NC		5	XTMCFXA11
10	4	2	1.5	2NO		5	XTMCFXA20
10	4	2	1.5	4NC		5	XTMCFXA04
10	4	2	1.5	1NO-3NC		5	XTMCFXA13
10	4	2	1.5	2NO-2NC		5	XTMCFXA22
10	4	2	1.5	3NO-1NC		5	XTMCFXA31
10	4	2	1.5	4NO		5	XTMCFXA40
10	4	2	1.5	1NO-1NC 1NO _E -1NC _L		5	XTMCFXA122 ②

Notes

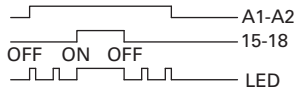
- ① Orders must be placed in multiples of package quantity listed.
- ② One early-make contact (NO_E), one late-break contact (NC_L).

Flow Diagrams—Electronic Timers, XTMT Mini Timers

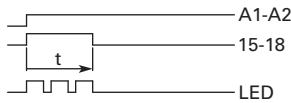
On-Delay



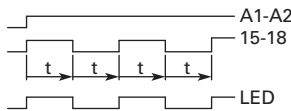
ON-OFF Function



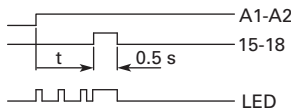
Fleeting Contact on Energization



Flashing, Pulse Initiating

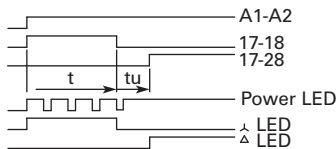


Pulse Generating



Star-Delta (Wye-Delta) Timer

Star-Delta



Rating Data

Rating Data for Approved Types

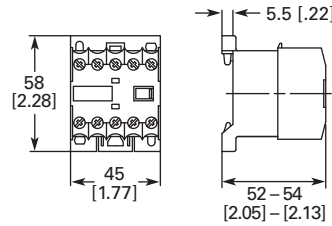
Pilot Duty	General Use
Control Relays—XTMR	
A600, P300	10A–600 Vac 0.5A–250 Vdc
Timers—XTMT, XTTR	
B300	6A–250 Vac

Dimensions

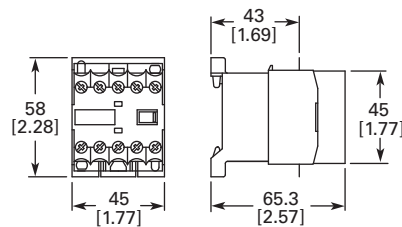
Approximate Dimensions in mm [in.]

Mini Contactor Relays

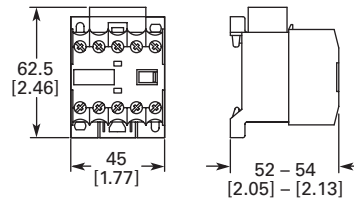
Mini Control Relay XTRM



XTRM Mini Control Relay with IP40 XTMCX Shroud



XTRM Mini Control Relay with RC or Varistor Suppressor



XTRM Mini Control Relay with XTMCXFA Auxiliary Contact

